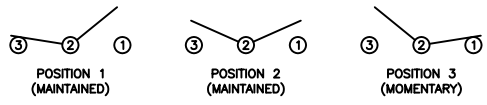
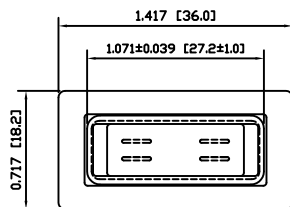


SCHMATIC

SPECIFICATIONS



FUNCTION:
1P2T ON-OFF-(ON)

RATINGS:
ANSI/UL 1054 and CAN/CSA C22.2 No. 55 (E194579):
16A 125VAC [cURus]
16A 250VAC [cURus]

CONTACT RESISTANCE:
Initial: 20mΩ Max.

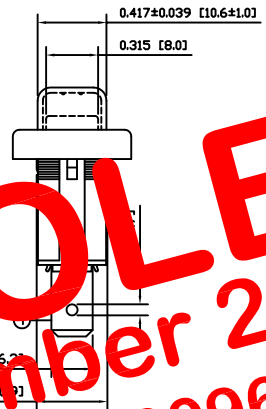
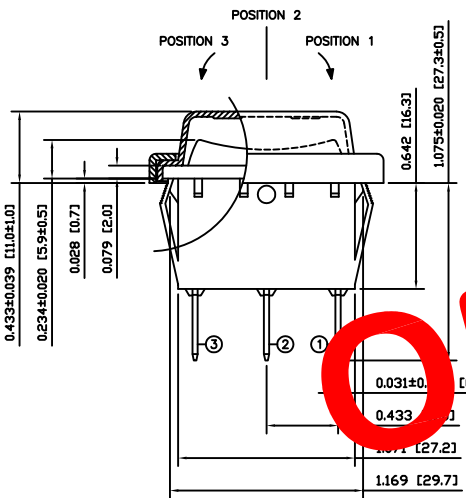
INSULATION RESISTANCE:
100MΩ Min. at 500VDC

DIELECTRIC STRENGTH:
1,000VAC for 1 Minute

ELECTRICAL LIFE:
6,000 Cycles [cURus]

TEMPERATURE:
Operating: -20°C to 65°C [cURus]

APPROVALS:
 RoHS
COMPLIANT



OBSOLETE
 November 2017
 PCR 23096

COLORS AND MARKINGS

BODY:
Black

ACTUATOR:
Black

MARKINGS:
None

MARKING COLOR:
None

MATERIALS

BODY:
Polyamide 6/6 (PA66), UL94 V-2

ACTUATOR:
Polyamide 6/6 (PA66), UL94 V-2

SPRING:
Steel

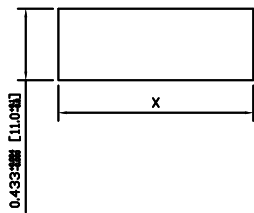
CONTACTS:
Silver Plated Copper

TERMINALS:
Silver Plated Copper
Silver Plated Brass

CAP:
Polyvinyl Chloride (PVC)

FRAME:
Polyamide 6/6 (PA66), UL94 V-2

SUGGESTED PANEL CUTOUT



| PANEL THICKNESS | X |
|-------------------------|--------------|
| 0.030~0.049 [0.75~1.25] | 1.181 [30.0] |
| 0.049~0.079 [1.25~2.00] | 1.189 [30.2] |
| 0.079~0.118 [2.00~3.00] | 1.201 [30.5] |

| | | | |
|----------------|------|----------|-----|
| ACTUATOR | A | 09/06/21 | CAB |
| BODY | A | 09/06/21 | CAB |
| COLORS | A | 09/06/26 | CAB |
| MATERIALS | A | 09/07/27 | CAB |
| SPECIFICATIONS | A | 09/06/26 | CAB |
| REFERENCE | REV. | DATE | BY |

THE INFORMATION CONTAINED IN THIS DOCUMENT IS PROPRIETARY TO E-SWITCH AND IS NOT TO BE COPIED OR TRANSFERRED

| | | | | |
|------|-----------------|-------|--------|----------|
| A | INITIAL RELEASE | 21180 | 8/1/13 | ERP |
| REV. | DESCRIPTION | PCR | DATE | DRAWN BY |

| | |
|--------------------|----------------------|
| DIMENSIONS | INCHES [MILLIMETERS] |
| GENERAL TOLERANCES | ±0.008 [±0.2] / ±1' |
| SCALE | DRAWING NOT TO SCALE |
| PROJECTION | |

RB14CE1100/ACC-F01-1

| | | |
|--------------------------------|------------------------|---------------|
| DRAWING NUMBER 14-RB1500231 | DATE AUGUST 1, 2013 | REVISION A |
|--------------------------------|------------------------|---------------|